






### 802 St James Crescent North Albury NSW

4  2  2 

Location is always important when looking for a property & we are proud to offer you this immaculate home perfectly nestled amongst quality homes in the exclusive St James Crescent with the Albury Golf Course & scenic walking tracks accessible just at the end of the court.

Freshly painted throughout with 4 bedrooms, multiple living areas plus plenty of updates & improvements including ducted heating & cooling, superb modern en-suite, updated bathroom & kitchen, inviting entrance plus the polished Pine flooring gives the home plenty of charm & warmth.

Step outside to a tiled undercover north facing pergola where you can entertain & enjoy the company of friends & family while admiring the neat & private yard with lovely garden surrounds. Tinker away in the workshop & keep things organised with the good size storage shed. A large

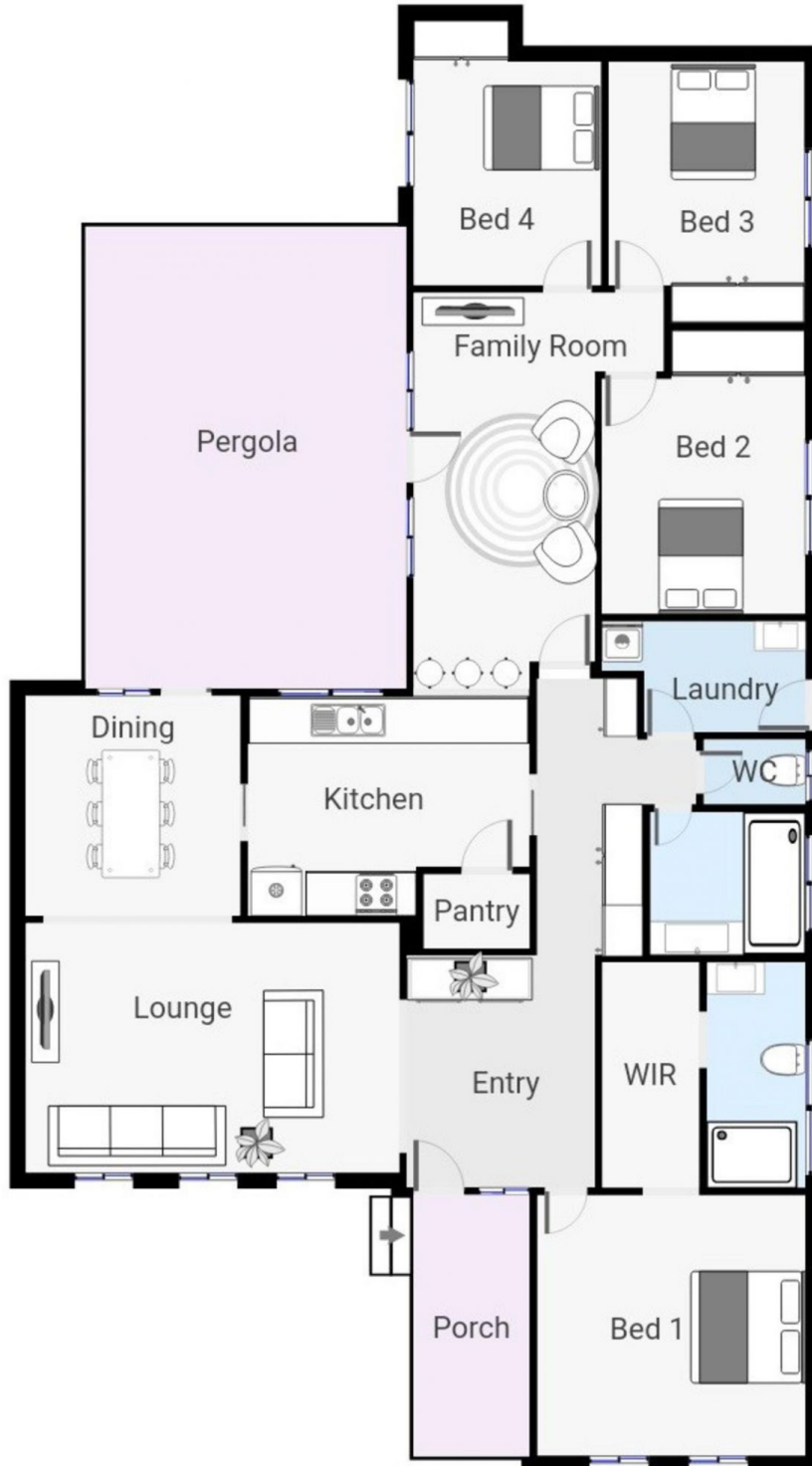
**Price** : \$ 639,000  
**Land Size** : 752.5 sqm  
**View** : <https://www.gyre.com.au/sale/nsw/murray-region/north-albury/residential/house/6438877>



**Clinton Gilson**  
02 6040 6818

## FLOOR PLAN

802 St James Crescent, North Albury



**Please note:** This plan has been generated for general guidance only.

We do not guarantee the accuracy of this plan including features, sizes & amenities it contains. We accept no responsibility of all liability in respect of any errors & inaccuracies contained herein.