



## 2/17 Kurrajong Crescent West Albury NSW

2  1  2 

Serenely and securely set at the rear of only two on the block, we introduce you to this spacious townhouse offering the perfect blend of space and style.

This well-designed residence boasts a spacious floorplan, double lockup garage, and great size private yard. The townhouse offers the perfect purchase for first home buyers, young families and savvy investors alike.

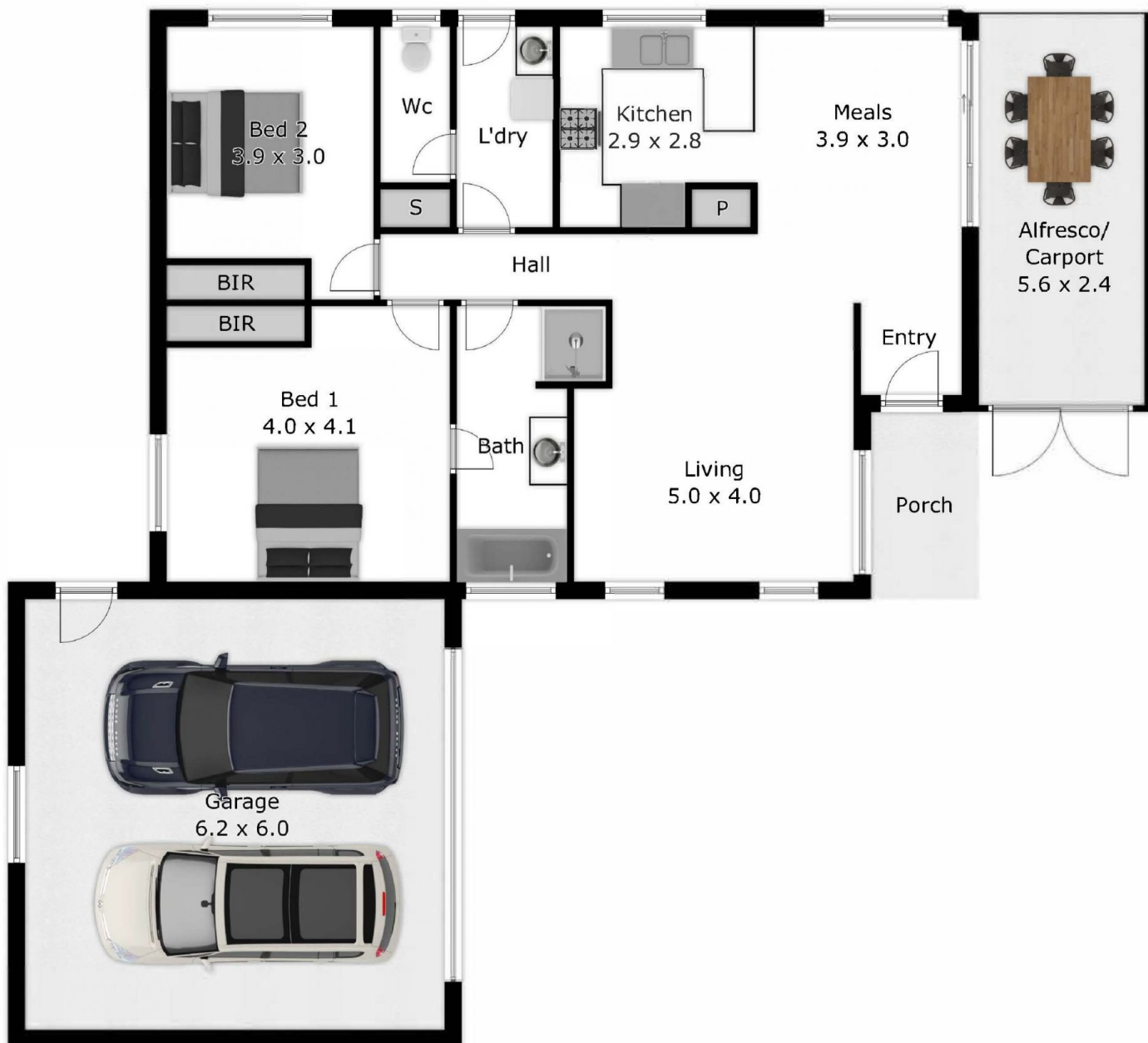
The property is located close to the local corner store, sporting field, and parks, and nearby is a child care centre, preschool, primary school, private hospital, Murray River, and Monument Hill.

Take the time to inspect this exceptional townhouse. You won't be disappointed. Pack your bags and move right in, this property is ready and waiting for you.

**Price** : \$ 350,000  
**Building Size** : 103 sqm  
**View** : <https://www.gyre.com.au/sale/nsw/murray-region/west-albury/residential/townhouse/7862285>



**Clinton Gilson**  
02 6040 6818



Please note: This plan has been generated for advertising only and may not be exact. Interested parties are to do their due diligence to verify any information provided in this plan.