



2/543 Paine Street Albury NSW

3  1  1 

Just minutes from Albury's vibrant CBD, this attractive townhouse is a true gem for those seeking comfort, convenience, and an easy-care lifestyle. From the moment you step inside, you'll appreciate the light and space that sets this home apart. In the living area, double glass doors open onto a private sun-drenched north-facing courtyard, ideal for entertaining. Set within a quiet street in an esteemed neighbourhood, yet just a short walk from the botanic gardens, cafes, shops, restaurants, and services of Dean Street, you'll find yourself at the centre of Albury's sought-after pocket. This property is an ideal base for busy professionals, downsizers or a young family. For investors, this is a smart addition to any portfolio.

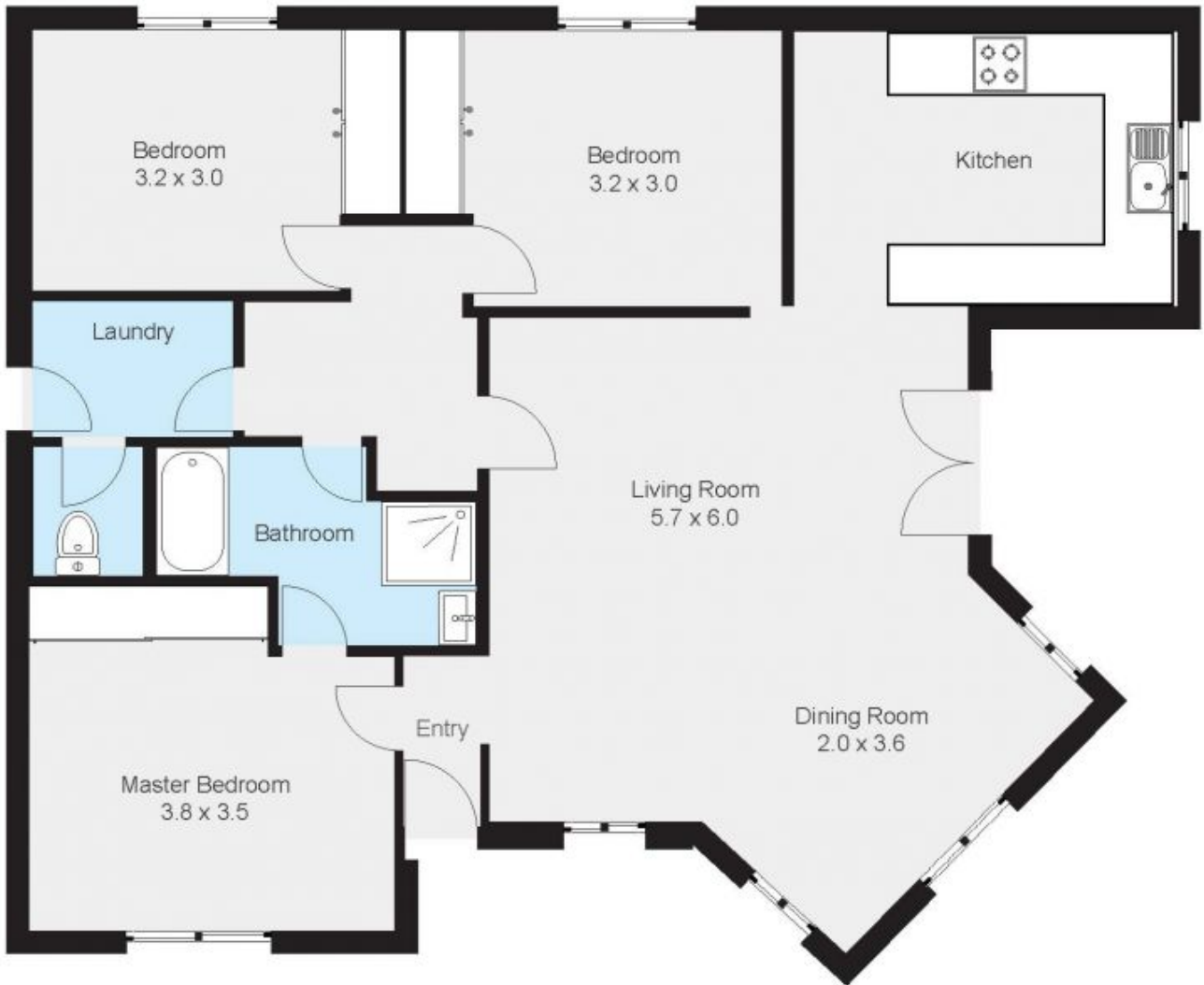
This rare 3-bedroom townhouse is ready for easy living or

[For full version visit the website](https://www.gyre.com.au)

Type : Townhouse
Building Size : 126.11 sqm
Land Size : 269 sqm
View : <https://www.gyre.com.au/8375292>



Clinton Gilson
02 6040 6818



Please note: This plan is for advertising purposes only and may not be entirely accurate. Interested parties should conduct their own due diligence to verify the information provided.