



1/345 Wahroonga Road Lavington NSW

3  **1**  **1** 

Beautifully maintained and thoughtfully presented, this townhouse offers a home that has been very well cared for, both inside and out. From the moment you arrive, its neat and tidy appearance creates a welcoming first impression, setting the tone for the comfort and convenience that lies within.

The property has recently been freshly painted throughout, giving it a bright and renewed feel, while brand new blinds add a stylish and functional finishing touch. Together, these updates ensure that the interior feels clean, modern, and ready for its new owners without the need for any additional work.

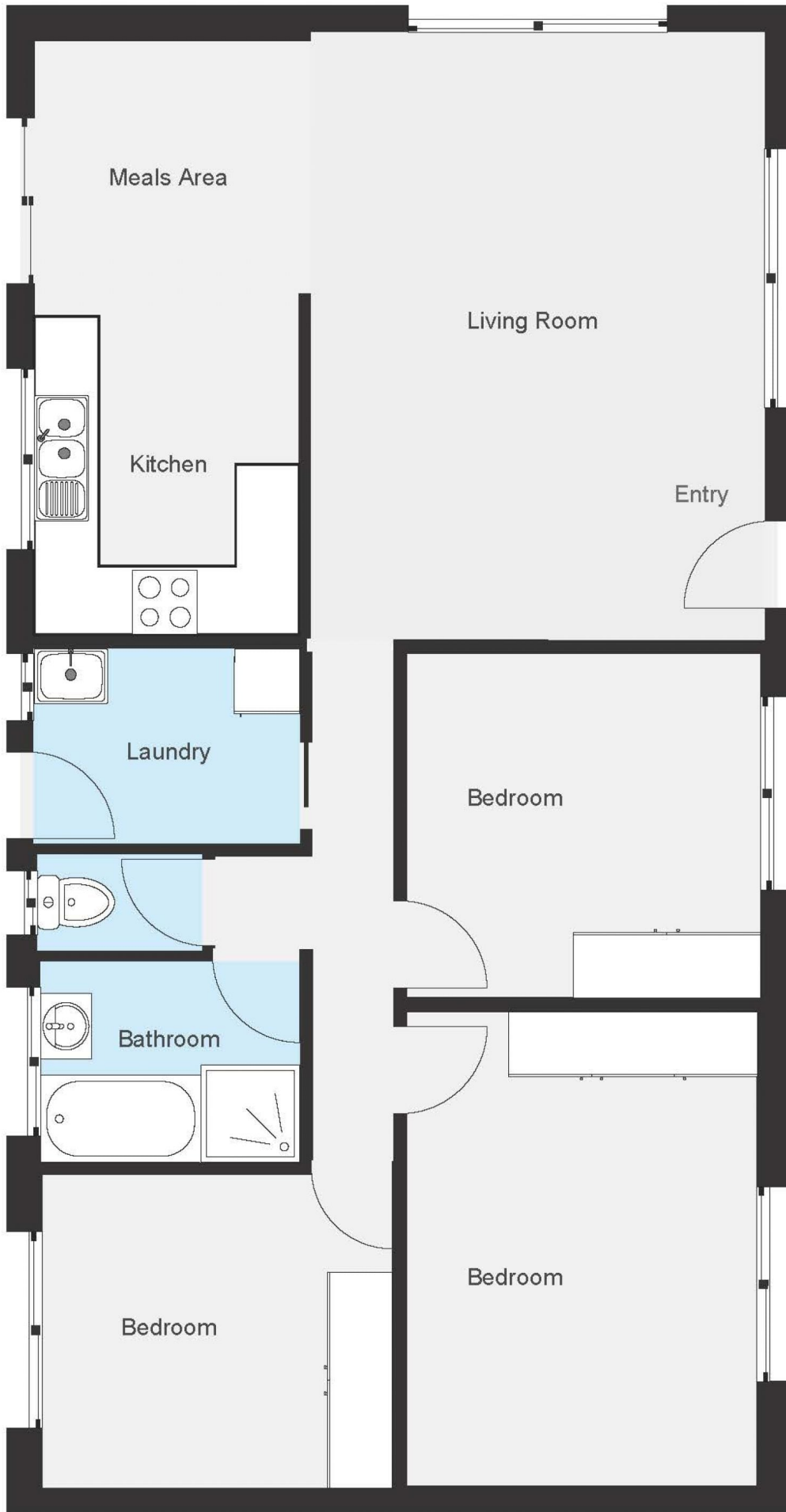
At the heart of the townhouse, the updated kitchen,

[For full version visit the website](https://www.gyre.com.au)

Type : Townhouse
Price : \$ 499,000
Building Size : 90 sqm
Land Size : 170 sqm
View : <https://www.gyre.com.au/8509857>



Clinton Gilson
02 6040 6818



Please note: This plan is for advertising purposes only and may not be entirely accurate. Interested parties should conduct their own due diligence to verify the information provided.