



6 Sunrise Terrace East Albury NSW

4  2  2 

Set in the prestigious Eastern View Estate, 6 Sunrise Terrace in East Albury is a home that combines elegance, comfort, and an exceptional location. The beautiful front facade immediately captures attention, framed by lovely established trees and landscaped gardens that create a tranquil, leafy setting. These shaded grounds not only enhance the home's street appeal but also provide a peaceful retreat, offering privacy and a sense of calm as you arrive.

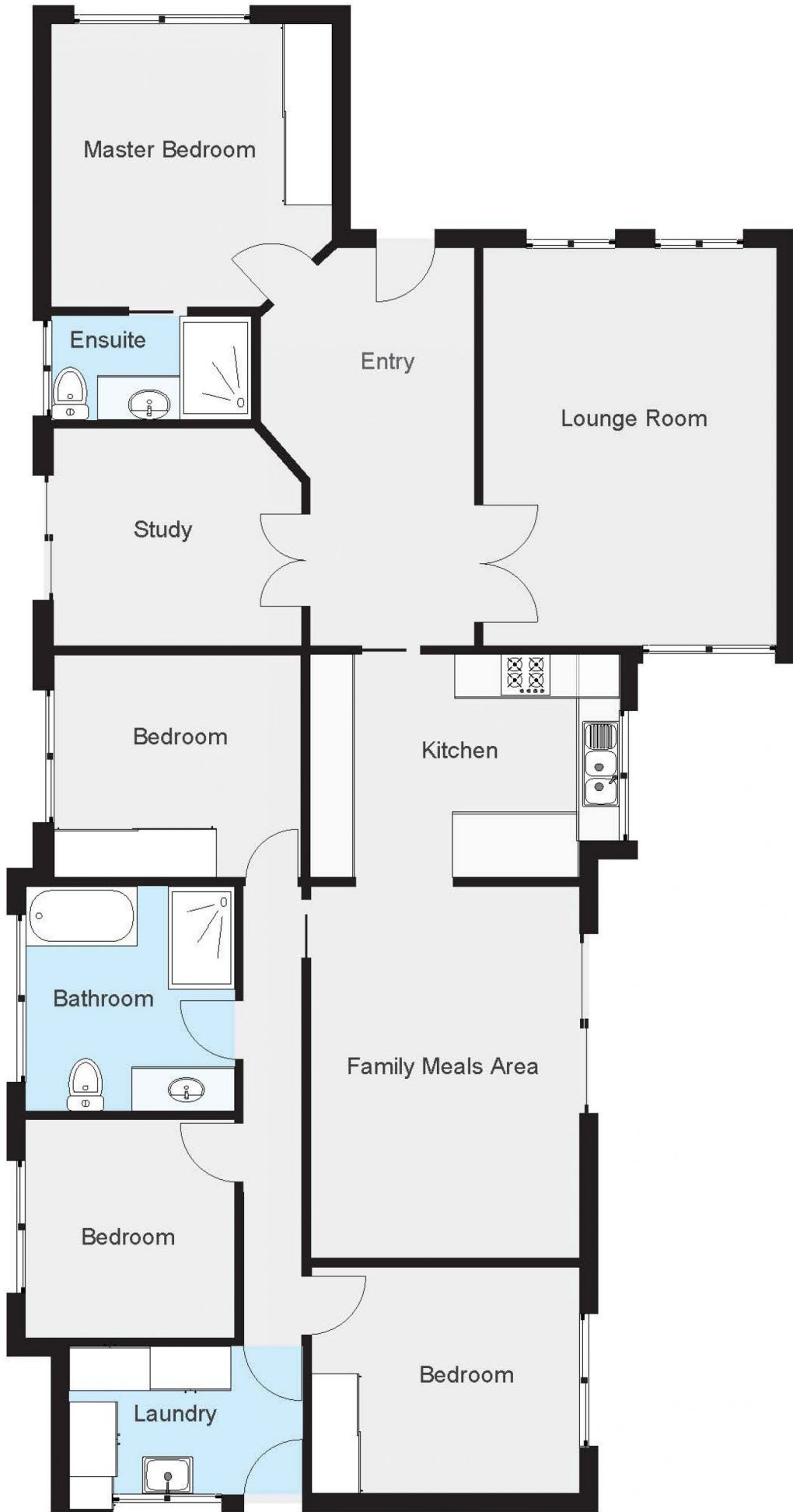
Stepping inside, you are welcomed by a warm and homely atmosphere where thoughtful decorative touches and charming details give the home a unique character. Every space feels inviting, with an ambience that makes you feel instantly at ease, whether you are relaxing with family or

Type : House
Price : \$ 845,000
Building Size : 163 sqm
Land Size : 1025 sqm
View : <https://www.gyre.com.au/8515996>



Clinton Gilson
02 6040 6818

[For full version visit the website](https://www.gyre.com.au)



Please note: This plan is for advertising purposes only and may not be entirely accurate. Interested parties should conduct their own due diligence to verify the information provided.